



EQUINE CATALOGUE



2019/2020 EDITION



A covetrus  Company

KRUUSE Equine Catalogue

INTRODUCTION

We are pleased to launch the first Provet KRUUSE Equine Catalogue, containing a wide range of equine products.

During the past couple of years, KRUUSE has made the equine product area a priority by putting together a team of equine specialists. This specialist team is led by Mr Henrik H. Pedersen and continues to progress and expand the range.

KRUUSE products are often developed in close co-operation with leading specialists who have been successful within their own field of expertise.



Throughout this catalogue you will find the 'Special Order' stamp on product lines that are currently not stocked, but can be ordered in on request. We will provide a quote and estimated delivery time before your order is placed. To enquire about any of these lines, please contact your Provet Business Account Manager or local Customer Service team.



QR Codes - Scan for more information

This catalogue also features a number of 'barcodes', otherwise known as QR Codes, to assist your veterinary team with correct application.

Simply use your smart phone to scan the QR code using a scanning app, which can be easily downloaded for free in seconds from your preferred app store, if not already installed.

Scanning these codes will conveniently direct you to video demonstrations that will provide further instructions on how to use a product.

Be sure to keep an eye out for these codes.





Contents

Recovery & Rehabilitation	2
Stomach Tubes & Accessories	5
Personal Protection Equipment	8
Wound Care	11
Injection & Infusion	17
Fluid Therapy	22
Blood Transfusion	25
Surgery	27
Ophthalmology	33
Hoof Equipment	36
Reproduction	37
Other Equine Products	40
Equine Wound Care Chart	42

RECOVERY & REHABILITATION

Under bandage characteristics

- Easy to place
- Adjustable
- Machine washable

The following KRUUSE Equine Bandages use the following materials:

Outside fabric:

100 % Velour.

TRIHOOK adhesive polyamide (an extra strong adhesive strip)

Interior support:

Polyester foam, 65% transpirable.

Interior fabric:

100% cotton.

All fabrics are machine washable at up to 60°C.



Monofilm fabric in cross-section

Thousands of microfilaments form an air cushion which protects the wound from knocks.

Sizing Guide:

- Foal Small Circumference: 70 - 89cm
- Foal Medium Circumference: 90 - 109cm
- Foal Large Circumference: 110 - 130cm

- Small Circumference: 130 - 170cm
- Medium Circumference: 170 - 200cm
- Large Circumference: 200 - 240cm



KRUUSE Frontal Bandaging

Indication: This bandage is indispensable when covering wounds and cuts in places difficult to bandage.

A combination of 3-dimensional elastic wrap with large adjustable areas of foam.

Standard length of front limb sleeve 22cm.



Provet Code	KRUUSE Code	Description	Pack Size
EQUI K F1	165212	KRUUSE Foal Frontal Bandaging , S	● Single
EQUI K F2	165213	KRUUSE Foal Frontal Bandaging , M	● Single
EQUI K F3	165214	KRUUSE Equine Frontal Bandaging , S	● Single
EQUI K F4	165215	KRUUSE Equine Frontal Bandaging , M	● Single
EQUI K F5	165216	KRUUSE Equine Frontal Bandaging , L	● Single



Scan code to view video

KRUUSE Post Colic Surgery Kit

Indication: Abdominal surgery.

An abdominal wrap with a removable and washable interior pocket. The mesh inside the interior pocket may be slit to create an opening for inserting and replacing absorbent drainage pads.

Able to be fitted in less than three minutes, the perfect post-operative bandaging.

External: Foam covered in velour that is adhesive to TRIHOOK (an extra strong adhesive strip).

Internal: 100% skin-friendly cotton.

- Breathable
- Finishing with elastic ribbon
- No sores or friction points.

The kit includes:

- 1 abdominal wrap with a removable pocket.
- 2 replacement interior pockets
- 3-4 dorsal straps (depending on the size)
- 1 breast strap



Interior pocket for inserting and replacing absorbent drainage pads



Provet Code	KRUUSE Code	Description	Pack Size
POST COL1	165206	KRUUSE Foal Post Colic Surgery Kit, S	Single
POST COL2	165207	KRUUSE Foal Post Colic Surgery Kit, M	Single
POST COL3	165208	KRUUSE Foal Post Colic Surgery Kit, L	Single
POST COL4	165209	KRUUSE Equine Post Colic Surgery Kit, S	Single
POST COL5	165210	KRUUSE Equine Post Colic Surgery Kit, M	Single
EQUI P 5	165211	KRUUSE Equine Post Colic Surgery Kit, L	Single
POST COL 7	165328	Colic Recovery Replacement Pockets	Single



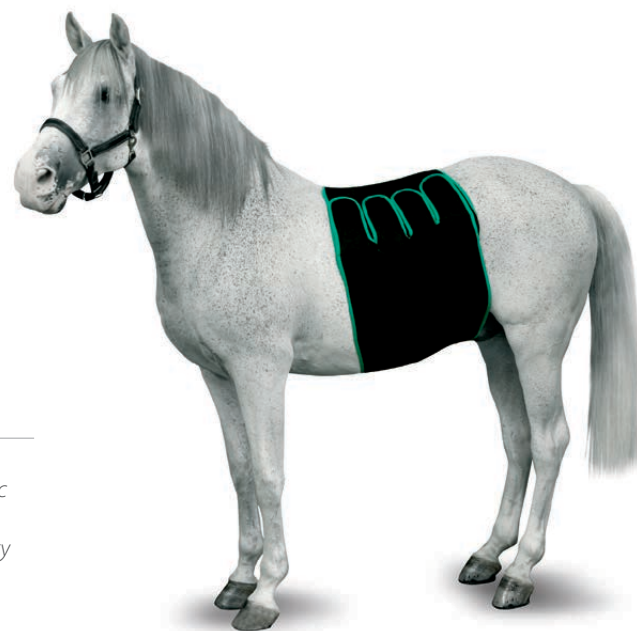
Scan code to view video

KRUUSE Recovery Bandaging

Indication: For immediate post-operative protection for the first hours after the surgery.

A 3-dimensional elastic wrap with wide foam endings covered in velour to form a strong adhesive to TRIHOOK.

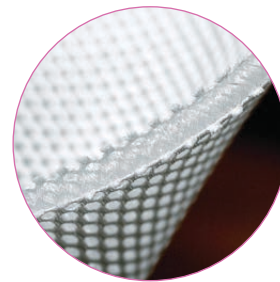
Interior pocket lined with a monofilm pad 1cm thick, acts as an air cushion for covering the lower abdomen. The Kruuse Recovery Bandage allows for the horse to stand up easier and provides full protection in the case of a violent recovery.



"One of the first hurdles the horse encounters post laparotomy is the anaesthetic recovery, where it is paramount the incision is protected from external trauma and potential contamination. The KRUUSE Recovery Bandages are used on every colic patient in our hospital and achieve both these goals. We find them easy to apply and are secure throughout anaesthetic recovery. The KRUUSE Post Colic Surgery bandages are also useful for laparotomy incisions, where extra attention is required as they provide additional support and are quick and easy to change."

Neil Townsend MSc BVSc Cert ES (Soft Tissue) DipECVS MRCVS RCVS and European Specialist in Equine Surgery University of Liverpool

Provet Code	KRUUSE Code	Description	Pack Size	
EQUI K R1	165200	KRUUSE Foal Recovery Bandaging, S	●	Single
EQUI K R2	165201	KRUUSE Foal Recovery Bandaging, M	●	Single
EQUI K R3	165202	KRUUSE Foal Recovery Bandaging, L	●	Single
EQUI K R4	165203	KRUUSE Equine Recovery Bandaging, S	●	Single
EQUI K R5	165204	KRUUSE Equine Recovery Bandaging, M	●	Single
EQUI K R6	165205	KRUUSE Equine Recovery Bandaging, L	●	Single



Monofilm fabric in cross-section

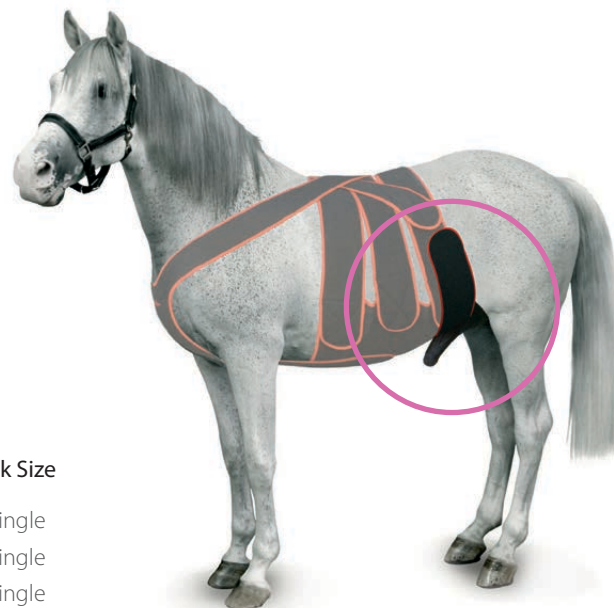
KRUUSE Equine Scrotum Strap

This strap is an addition to the Post Colic Surgery Kit and only for male horses.

The strap has three adjustment points. The goal is to adjust the small hollow just in front of the penis to avoid the horse urinating inside the abdominal wrap.

Use:

Fit the KRUUSE Scrotum Strap in the middle just in front of the penis and fasten on the dorsal strap.



Provet Code	KRUUSE Code	Description	Pack Size	
EQUI K S1	165320	KRUUSE Equine Scrotum Strap, S	●	Single
EQUI K S2	165321	KRUUSE Equine Scrotum Strap, M	●	Single
EQUI K S3	165322	KRUUSE Equine Scrotum Strap, L	●	Single

STOMACH TUBES & ACCESSORIES

EQUIVET Stomach Tube with Side Holes (Superior)

These tubes are made of polyurethane (PU) so that their flexibility is not influenced by temperature and have a long life expectancy.

The tubes are smooth allowing an easy insertion, while the nose end which features rounded edges, reduces the risk of tissue damage.

The opposite end formed is ridged for a secure and easy connection with the Stomach Pump, Funnel and Activated Charcoal Bottle. Easy to clean and can withstand all normal disinfectants. Non-traumatic side holes (2).



Provet Code	KRUUSE Code	Description	Pack Size
STOM TS 0	190270	EQUIVET Stomach Tube, Foal, 9 x 2,600mm	Single
STOM TS 1	190271	EQUIVET Stomach Tube, Small, 13 x 3,200mm	Single
STOM TS 2	190272	EQUIVET Stomach Tube, Medium, 16 x 3,600mm	Single
STOM TS 3	190273	EQUIVET Stomach Tube, Large, 19 x 3,600mm	Single

EQUIVET Stomach Tubes, no Side Holes (Superior)

Same specification as EQUIVET Stomach Tube without the side holes. Polyurethane.



Provet Code	KRUUSE Code	Description	Pack Size
STOM T R1	190274	EQUIVET Stomach Tube, Foal, 9 x 2,600mm	Single
STOM T R2	190275	EQUIVET Stomach Tube, Small, 13 x 3,200mm	Single
STOM T EV3	190276	EQUIVET Stomach Tube, Medium, 16 x 3,600mm	Single
STOM T EV4	190277	EQUIVET Stomach Tube, Large, 19 x 3,600mm	Single

EQUIVET Funnel for Stomach Tubes

The Equivet Funnel has a conical end that fits all sizes of nasal stomach tubes and can hold 3L. Now the equine veterinarian has a funnel which is designed specifically for this purpose and is practical to use.

Provet Code	KRUUSE Code	Description	Pack Size
FUNN EQ L	190132	EQUIVET Funnel for Stomach Tubes	Single



KRUUSE Activated Charcoal

1L bottle of activated charcoal with a practical connecting piece for an easy administration directly into the stomach tube.

Dosage:

- > 400kg patient: 1 bottle
- 100 - 400kg patient: 1/2 bottle
- < 100kg patient: 1/4 bottle

Recommended by Veterinary Poisons Information Service, UK

Provet Code	KRUUSE Code	Description	Pack Size
ACTIC S1	310380	KRUUSE Activated Charcoal - Soluble 1L	Single



SPECIAL ORDER

KRUUSE Oesophagus Irrigation Choke Tube

This tube helps to remove an obstruction of the oesophagus (choke). The main tube contains a mobile irrigator inserted into a separate lumen, which can be guided to the obstruction. An elastic cuff seals off the oesophagus and during irrigation, the irrigator tube can be extended further into the impaction. The dissolved mass can then be flushed out through the main tube in a continuous flow with no danger of aspiration into the lungs.



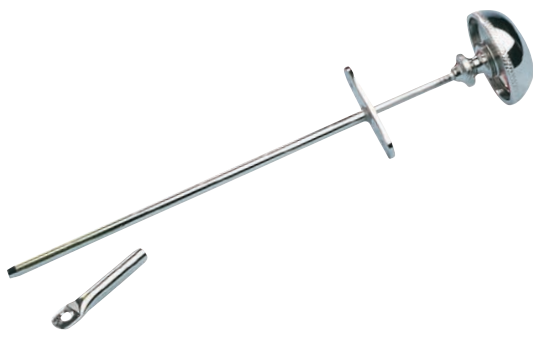
KRUUSE Code	Description
190255	KRUUSE Oesophagus Irrigation Tube

SPECIAL ORDER

KRUUSE Trocar

Useful for caecum punching.

KRUUSE Code	Description
190370	Trocar 3 x 135mm Stainless Steel



SPECIAL ORDER

EQUIVET Balling Gun

Made of nickel-plated metal. Length 51cm, diameter 30mm.

KRUUSE Code	Description
240690	EQUIVET Balling Gun



EQUIVET Stomach Pump

For stomach tubes, nickel-plated.



Provet Code	KRUUSE Code	Description
EQUI K SP1	190130	EQUIVET Stomach Pump
-	190135	Spare Parts for Stomach Pump, O-ring and Felt Gasket



PERSONAL PROTECTIVE EQUIPMENT

KRUTEX Orange Super Sensitive Gloves

- Soft, smooth and extremely strong
- Very high sensitivity
- Cut diagonally for a better fit
- Made from 100% polyethylene
- Thickness: 25µm
- 90cm long
- Dispenser box of 100



Provet Code	KRUUSE Code	Description	Pack Size
GLOV K	260700	KRUTEX Super Sensitive Gloves, Large	100

KRUTEX Super Sensitive Examination Gloves with Shoulder Protector

- Highest quality and sensitivity
- Designed with neck strap for secure fastening
- Designed to eliminate soiling of shoulder, chest and armpit area for extra hygiene
- Made from 100% polyethylene
- Thickness: 25µm
- 90cm long (from fingertip to neck opening)
- Dispenser box of 50



Provet Code	KRUUSE Code	Description	Pack Size
GLOV KPO	260726	KRUTEX Super Sensitive Gloves, with Shoulder Protector, Large	50

KRUTEX Super Touch Protector Examination Gloves with Shoulder Protector

- High quality with superior tactile sensitivity
- Designed with neck strap for secure fastening
- Designed to eliminate soiling of shoulder, chest and armpit area for extra hygiene
- Made from 100% polyethylene
- Thickness: 25µm
- 90cm long (from fingertip to neck opening)
- Dispenser box of 50



Provet Code	KRUUSE Code	Description	Pack Size
GLOV KPY	260725	KRUTEX Super Touch Gloves, with Shoulder Protector, Large	50

KRUTEX Soft Examination Gloves

- Disposable arm length gloves
- Soft and strong for multipurpose veterinary and AI use
- Cut diagonally for a better fit
- Made from 100% polyethylene
- Thickness: 25µm
- 95cm long
- Dispenser box of 100



Provet Code	KRUUSE Code	Description	Pack Size
GLOV K GS	260685	KRUTEX Soft Examination Gloves, Large	100

KRUTEX Soft Examination Protector Gloves with Shoulder Protector

- Designed with neck strap for secure fastening
- Designed to eliminate soiling of shoulder, chest and armpit area for extra hygiene
- Made from 100% polyethylene
- Thickness: 25µm
- 90cm long (from fingertip to neck opening)
- Dispenser box of 50



Provet Code	KRUUSE Code	Description	Pack Size
GLOV KPG	260724	KRUTEX Examination Gloves, Soft, with Shoulder Protector, Large	50

KRUTEX Shoulder Protector

A heavy-duty yet lightweight shoulder/sleeve protector. Made from waterproof polyamide with welded seams and a rubber cuffed sleeve.

69% PVC, 31% nylon polyamide

Provet Code	KRUUSE Code	Description	Pack Size
SHOU P 3	260560	KRUTEX Shoulder Protector, Rubber Sleeve Plate, Long Version	Single
SHOU P 4	260561	KRUTEX Shoulder Protector, Rubber Sleeve Plate, Short Version	Single



EQUIVET Colic Gown - Sterile

Reinforced total outer protection. PE/Non woven on the front and on the sleeves, non woven hydrophobic SMS on the back.

4 x belts

2 x towels

Provet Code	KRUUSE Code	Description	Pack Size
GOWN C K1	281640	Colic Gown Medium, w 145 cm, h 120 cm	Single
GOWN C K2	281641	Colic Gown Large, w 150 cm, h 130 cm	Single
GOWN C K3	281642	Colic Gown XLarge, w 160 cm, h 140 cm	Single



KRUTEX Disposable Obstetric Gown

Green plastic, closures in back and at wrists.

Can be used for any obstetric procedure. A great gown that can save you time washing your clothes after a foaling.

0.03mm thickness. Waterproof.

Sleeves can be cut to desired length.

Provet Code	KRUUSE Code	Description	Pack Size
GOWN O K2	260589	KRUTEX Disposable Obstetric Gown, Small	25
GOWN O K1	260609	KRUTEX Disposable Obstetric Gown, Large	25



KRUTEX Overboot Disposable Boot Covers

KRUTEX Overboot Disposable Boot Covers are well known for their excellent strength and non-slip qualities. 100% polyethylene.

- No underfoot welding seams for a comfortable fit
- Thickness: 40µ
- Length: 50cm

Provet Code	KRUUSE Code	Description	Pack Size
BOOT K 01	260640	KRUTEX Overboot Disposable Heavy Duty, Long	10 pairs



KRUUSE Wound Flushing Unit

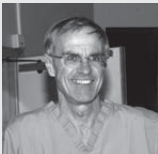
The KRUUSE Wound Flushing Unit facilitates optimal wound care at an affordable price. Effective wound irrigation is ensured by delivering body temperature isotonic fluid at the correct pressure.

KRUUSE is the first company to develop a dedicated veterinary wound flushing device with a documented and stabilised pressure of 0.82 bar (12psi). The flushing unit delivers 3L of fluid in less than 5 minutes.

Provet Code	KRUUSE Code	Description	Pack Size
WOUN F U1	165050	KRUUSE Wound Flushing Unit	Each

"Progress in practical and economical wound management does not happen very often. The KRUUSE Wound Flushing Unit is physiologically sound and very well constructed. This simple system will certainly enhance your reputation for wound management and you will find that you get better results!"

I cannot recommend this piece of equipment highly enough – every practice should have several of these available at all times!"



Professor Derek C Knottenbelt OBE,
BVMS, DVM&S, DipECEIM, MRCVS
Recognised RCVS and European Specialist
in Equine Internal Medicine



Scan code to view video

KRUUSE Wound Flushing Solution

The KRUUSE Wound Flushing Solution sachet contains the correct amount of electrolyte to add to the Wound Flushing Unit to produce 3L of body temperature physiological saline solution.

The sachet also includes 0.04% polyhexanide (PHMB) as a preservative. This solution is ideal for professional wound flushing in a busy surgical or single-handed field setting.

Provet Code	KRUUSE Code	Description	Pack Size
WOUND F S1	165051	KRUUSE Wound Flushing Solution	10

One sachet contains 30.051g powder consisting of:

Chloride	11.591g
Sodium	8.964g
Lactate	7.482g
Potassium	0.470g
Calcium	0.181g
PHMB	1.200g
Water	0.163g

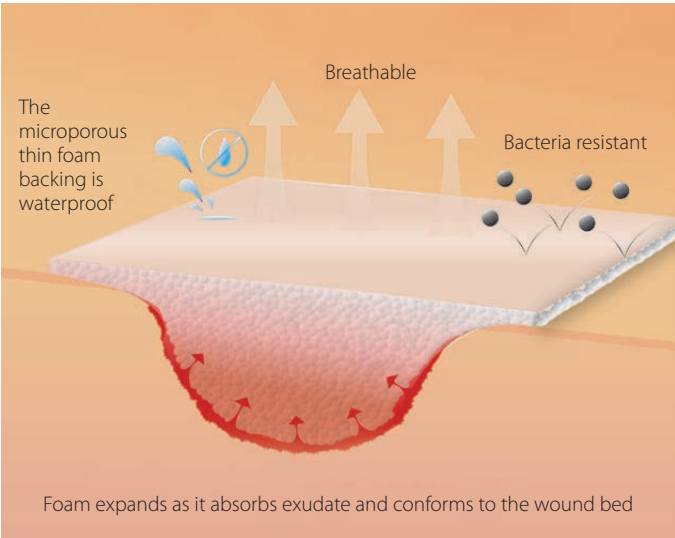


KRUUSE Foam Dressing

A 4.5mm non-adhesive PU (polyurethane) foam dressing backed by a thin PU film bacterial barrier.

Key Functions:

- Highly absorbent wound dressing
- Non-adherent
- Promotes moist wound healing
- Conforms to the wound bed
- Provides thermal insulation for enhanced healing
- Excellent moisture vapour transmission rate reduces the need for dressing changes



Scan code to view video

Provet Code	KRUUSE Code	Description	Pack Size
DRES F 6	165030	KRUUSE Foam Dressing 5 x 5cm, sterile	Single
DRES F 2	165030	KRUUSE Foam Dressing 5 x 5cm, sterile	10
DRES F 7	165031	KRUUSE Foam Dressing 10 x 10cm, sterile	Single
DRES F 3	165031	KRUUSE Foam Dressing 10 x 10cm, sterile	10
DRES F 1	165032	KRUUSE Foam Dressing 15 x 15cm, sterile	Single
DRES F 4	165032	KRUUSE Foam Dressing 15 x 15cm, sterile	5
DRES F 8	165033	KRUUSE Foam Dressing 10 x 20cm, sterile	Single
DRES F 5	165033	KRUUSE Foam Dressing 10 x 20cm, sterile	10



KRUUSE Steri-Protect: Super Absorbent Dressing

Sterile veterinary poultice dressing. Excellent absorbency.
Free from added chemicals. Size of dressing: 20 x 40cm.
Contains no boric acid.

How to apply **hot dressing**

Pour boiled water into a shallow container and cool to 37°C. Cut the dressing to the size and shape required and place in the water. When saturated, remove from the water and squeeze out excess liquid. Place over the affected area with the shiny side away from the skin. Secure with a bandage.

How to apply **cold dressing**

Soak the dressing in boiled water as described above, and let the dressing cool completely. Apply to affected area. The dressing can also be chilled in the refrigerator and kept in the bag.

How to apply **dry dressing**

Apply to the affected area and secure with a bandage. Avoid applying the bandage too tightly. Always apply with shiny side away from the skin.



Provet Code	KRUUSE Code	Description	Pack Size
STER I 10	160700	KRUUSE Steri-Protect 20 x 40cm, sterile	10

KRUUSE EquiPadding

High quality, medical bleached absorbent cotton wool with fibre length 2-2.5cm covered with gauze threads 18 x 26 per inch².

Gentle support

- Lower limb protection
- Support for tendons and joints

Good heat insulation

- Keeps tendons and muscles warm

Wound padding

- Gives superior protection to wounds whether they are dry, discharging or infected
- Standard wound care and management principles should always be applied
- Can be sterilised

Easy to use

- Can be cut into the exact size and shape required
- Secure with a support bandage or an elastic dressing
- Avoid overlapping as this could result in pressure points
- Where pressure points such as the knee are at risk, a "comfort" hole should be made



Provet Code	KRUUSE Code	Description	Pack Size
VETP P	165071	KRUUSE EquiPadding 30cm x 3.2m, 500g	1 roll
VETP P 01	165072	KRUUSE EquiPadding 45cm x 2.3m, 500g	1 roll

KRUUSE Soft-flex Bandages

KRUUSE Soft-flex Adhesive is a white 5mm thick bandage made of PU foam with a strong adhesive. It is soft, lightweight and comfortable for patients. Air permeable. Skin-friendly. Non-slip, therefore ideal for fixating dressings, with back releasing paper throughout the whole roll. No adhesive residue upon removal. Can be used to fix a dressing in place, to support joints and as polster bandage.

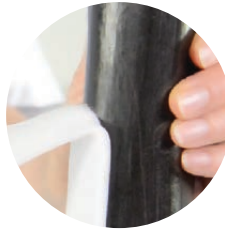
Provet Code	KRUUSE Code	Description	Pack Size
BAND SF1AD	160963	KRUUSE Soft-flex 5cm x 2.5m, Adhesive	Each
BAND SF2AD	160964	KRUUSE Soft-flex 10cm x 2.5m, Adhesive	Each



Back releasing paper



Adhesive on one side



Leaves no residue upon removal



KRUUSE Soft-flex Cohesive is a white 5mm thick bandage made of PU foam with a cohesive adherence. It is soft, lightweight and comfortable for patients. Air permeable. Skin-friendly. Non-slip, therefore ideal for fixating dressings, with back releasing paper throughout the whole roll. No adhesive residue upon removal. Can be used to fix a dressing in place, to support joints and as polster. Sticks to itself via the latex coating and not to skin and hair.

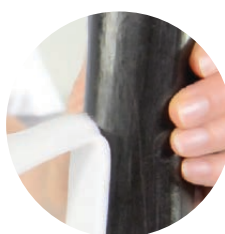
Provet Code	KRUUSE Code	Description	Pack Size
BAND SF1CO	160966	KRUUSE Soft-flex 5cm x 2.5m, Cohesive	Each
BAND SF2CO	160967	KRUUSE Soft-flex 10cm x 2.5m, Cohesive	Each



Back releasing paper



Cohesive on both sides



Leaves no residue upon removal



Scan code to view video

KRUUSE Vet-Flex Bandage

Superior quality flexible cohesive bandage. Strong, stable, yet comfortable fixation (35g/m²). Easy to tear. Excellent elasticity, can stretch twice its unrolled length. Porous for optimal breathability. Water resistant for safer hygiene. Each roll is individually packaged in a dispenser box of 10 rolls.



Scan code to view video

Provet Code	KRUUSE Code	Description	Pack Size
BAND VF7RD	160747	KRUUSE Vet-Flex 7.5cm x 4.5m, red	Single
BAND VF7BL	160748	KRUUSE Vet-Flex 7.5cm x 4.5m, blue	Single
BAND VF7GR	160731	KRUUSE Vet-Flex 7.5cm x 4.5m, green	Single
BAND VF7WH	160732	KRUUSE Vet-Flex 7.5cm x 4.5m, white	Single
BAND VF7BK	160749	KRUUSE Vet-Flex 7.5cm x 4.5m, black	Single
BAND VF10R	160734	KRUUSE Vet-Flex 10cm x 4.5m, red	Single
BAND VF10B	160735	KRUUSE Vet-Flex 10cm x 4.5m, blue	Single
BAND VF10G	160736	KRUUSE Vet-Flex 10cm x 4.5m, green	Single
BAND VF10Y	160737	KRUUSE Vet-Flex 10cm x 4.5m, yellow	Single
BAND VF10K	160738	KRUUSE Vet-Flex 10cm x 4.5m, black	Single
BANDVF10W	160733	KRUUSE Vet-Flex 10cm x 4.5m, white	Single
BAND CM15B	160743	KRUUSE Vet-Flex 15cm x 15m, blue	Single
BAND CM15K	160726	KRUUSE Vet-Flex 15cm x 15m, black	Single
BAND CM15R	160742	KRUUSE Vet-Flex 15cm x 15m, red	Single

BUSTER Tubular Stretch Bandage

This easy to apply custom-fit bandage is excellent for difficult-to-bandage areas (e.g. limbs).

- Firm, yet comfortable pressure for stable fixation.
- Porous texture provides air flow to aid healing and breathability. No tape required.
- No unraveling when trimmed/torn; excellent material memory.
- Very easy to change.



Provet Code	KRUUSE Code	Description	Pack Size
TUBU SB 38	160482	BUSTER Tubular Stretch Bandage, White, 3.8cm x 6.5m	Single
TUBU SS 05	160483	BUSTER Tubular Stretch Bandage, White, 5cm x 6.5m	Single
TUBU SS 75	160484	BUSTER Tubular Stretch Bandage, White, 7.5cm x 6.5m	Single
TUBU SB 88	160485	BUSTER Tubular Stretch Bandage, White, 8.8cm x 6.5m	Single



Scan code to view video

Vet-Lite Bandage

Ventilated white thermoplastic mesh splinting and casting material. Lightweight and very strong.

When heated in hot water it turns into a soft malleable material that can be shaped into any configuration then hardens as it cools. X-ray translucent.



Provet Code	KRUUSE Code	Description	Pack Size
VETL 01	160610	Vet-Lite Bandage 5cm x 1.6m	1 roll
VETL 02	160620	Vet-Lite Bandage 7.5cm x 1.6m	1 roll
VETL 03	160630	Vet-Lite Bandage 10cm x 1.6m	1 roll
VETL 05	160640	Vet-Lite Bandage 15cm x 1.6m	1 roll

KRUUSE Tendersorb

Non-sterile, waterproof abdominal bandage; reduces the risk of soakage by means of barrier fluid and distributes the fluid evenly in the bandage. The absorbent material absorbs more fluid than conventional abdominal bandages.



Provet Code	KRUUSE Code	Description	Pack Size
BAND CO K1	160313	Tendersorb 13.5 x 23cm, Non-sterile	48/pk

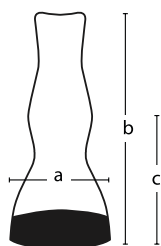
**SPECIAL
ORDER**

EQUIVET Monkey Splint

It is well known that the sooner a horse with severe leg injuries is immobilised, the greater the probability that the horse will return successfully to its former use.

This splint is made of 5mm ABS plastic, conferring great strength and providing excellent support for distal limb injuries. The lower portion of the splint includes a block wedge designed to elevate and support the back of the hoof. In conjunction with the moulded dorsal portion of the splint, the wedge removes strain from the digital flexor tendons and completely immobilises the distal joints of the limb. Indications for the splint include the treatment of severe tendon injuries, lacerations and the immobilisation of distal limb fractures. The splint offers rapid and efficient support for transportation to the hospital or clinic. The material is fully radioculent and is unaffected by water, blood and disinfectant solutions.

The Monkey Splints are ready for use including bandage kit (160570 contains a compress and gauze bandage). Highly recommended across all equine veterinary practices.



Measurements (mm):

Size	a	b	c
Small	120	405	240
Medium	140	450	265
Large	160	450	265

a: Inside width
b: Total height
c: Height to middle of sesamoid



KRUUSE Code	Description
160561	Monkey Splint 120mm, Small
160560	Monkey Splint 140mm, Medium
160555	Monkey Splint 160mm, Large
160570	Monkey Splint Bandage Kit

INJECTION & INFUSION

KRUUSE Vet Hypodermic Needles

- Superior strength and sharpness
- Large range of sizes
- Plastic luer lock hub
- Facet shaped needles for smooth puncture
- Semi-transparent plastic needle hub for the convenient observation of blood reflux
- Paper-film peel pack



Provet Code	KRUUSE Code	Description	Pack Size
NEED K 03	121284	16G x 1" 25mm	100
NEED K 02	121285	16G x 1½" 40mm	100
NEED K 04	121283	18G x 1" 25mm	100
NEED K 05	121282	18G x 1½" 40mm	100
NEED K 11	121281	19G x ⅝" 16mm	100
NEED K 01	121279	19G x 1" 25mm	100
NEED K 06	121280	19G x 1½" 40mm	100
NEED K 13	121292	20G x ½" 13mm	100
NEED K 07	121277	20G x 1" 25mm	100
NEED K 08	121278	20G x 1½" 40mm	100
NEED K 18	121275	21G x ⅜" 10mm	100
NEED K 17	121276	21G x ⅝" 16mm	100
NEED K 12	121273	21G x 1" 25mm	100
NEED K 16	121274	21G x 1½" 40mm	100
NEED K 20	121291	22G x ¾" 20mm	100
NEED K 19	121287	22G x 1¼" 30mm	100
NEED K 09	121271	23G x ⅝" 16mm	100
NEED K 22	121272	23G x 1" 25mm	100
NEED K 25	121294	23G x ¾" 19mm	100
NEED K 21	121286	23G x 1¼" 30mm	100
NEED K 23	121290	24G x 1" 25mm	100
NEED K 10	121270	25G x ⅝" 16mm	100
NEED K 24	121289	26G x 1" 25mm	100
NEED K 14	121288	27G x ¾" 20mm	100



FEATURED PRODUCT

EQUIVET HiFlow IV Catheters

Traditional jugular catheters made with Teflon can create a thrombosis or crack if left in place for over 48 hours. On the other hand, the polyurethane HiFlow IV Catheters may dwell for up to 30 days.

The EQUIVET HiFlow LongTerm (HFLT) IV Catheter softens at body temperature. Some common catheter-related problems, such as phlebitis, can be minimised with these polyurethane catheters. Non-thrombogenic and non-cracking. Can be safely left in the vein for up to 30 days. Suture wings with holes.



Provet Code	KRUUSE Code	Description	Pack Size
CATH HF 1	122000	EQUIVET HiFlow Long-term IV catheter 16G x 3.00"	Single
CATH HF 2	122005	EQUIVET HiFlow Long-term IV catheter 14G x 3.50"	Single
CATH HF 3	122010	EQUIVET HiFlow Long-term IV catheter 14G x 5.25"	Single
CATH HF 4	122015	EQUIVET HiFlow Long-term IV Catheter 12G x 5.25"	Single

KRUUSE IV Catheter Venocan Plus - Pencil Style

Superior quality and performance IV catheters for all veterinary applications.

- Made with medical grade Teflon FEP (Fluorinated Ethylene Propylene)
- Teflon is associated with less infectious complications, more resistant to bacterial adherence and reduces the incidence of thrombophlebitis
- Features a transparent chamber that enables visualisation of blood flashback
- Pull off cap
- Ideal for precise catheter placement
- User friendly peel pack
- Sterile



Provet Code	KRUUSE Code	Description	Pack Size
CATH PC 1	121930	IV Catheter Pencil Style, 18G x 1¾"	Single
CATH PC 2	121931	IV Catheter Pencil Style, 20G x 1¼"	Single
CATH PC 3	121932	IV Catheter Pencil Style, 22G x 1"	Single
CATH PC 4	121933	IV Catheter Pencil Style, 24G x ¾"	Single

KRUUSE Vet Needles

High quality, reusable needles. Made of stainless steel. Sterilisable.



*Photos not to scale

Provet Code	KRUUSE Code	Description	Pack Size
NEED LL K1	120602	KRUUSE-Vet Needles 0.9 x 13mm, Luer Lock, 20G x 1/2"	12/pk
NEED LL K2	120624	KRUUSE-Vet Needles 1.2 x 20mm, Luer Lock, 18G x 3/4"	12/pk
NEED LL K3	120722	KRUUSE-Vet Needles 1.2 x 15mm, Luer Lock, 18G x 5/8"	12/pk
NEED LL K9	120767	KRUUSE-Vet Needles 1.2 x 10mm, Luer Lock, 18G x 3/8"	12/pk
NEED LLK10	120765	KRUUSE-Vet Needles 1.2 x 13mm, Luer Lock, 18G x 1/2"	12/pk
NEED LLK11	120723	KRUUSE-Vet Needles 1.2 x 25mm, Luer Lock, 18G x 1"	12/pk
NEED LL K4	120736	KRUUSE-Vet Needles 1.6 x 20mm, Luer Lock, 16G x 3/4"	12/pk
NEED LL K5	120742	KRUUSE-Vet Needles 1.6 x 30mm, Luer Lock, 16G x 1 1/4"	12/pk
NEED LL K6	120743	KRUUSE-Vet Needles 1.6 x 13mm, Luer Lock, 16G x 1/2"	12/pk
NEED LL K7	120744	KRUUSE-Vet Needles 1.6 x 25mm, Luer Lock, 16G x 1"	12/pk
NEED LL K8	120824	KRUUSE-Vet Needles 2.0 x 40mm, Luer Lock, 14G x 1 1/2"	12/pk



KRUUSE Disposable Needle with Aluminium Hub

High quality injection needles, available in a range of sizes specially designed for the Veterinary profession. Pyrogen-free. Sterilised with ethylene oxide.

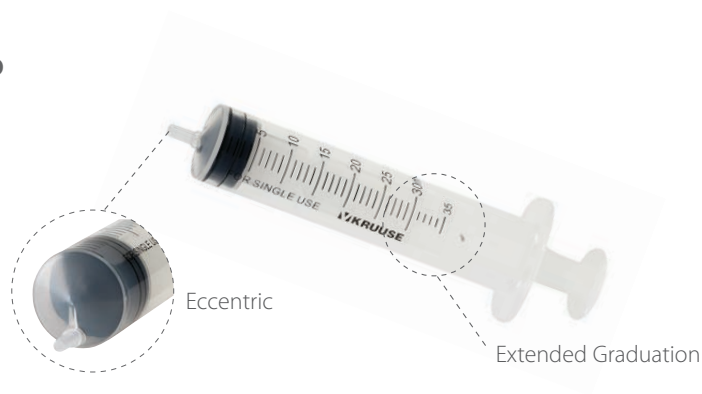


Provet Code	KRUUSE Code	Description	Pack Size
NEED KA 01	121379	KRUUSE Disp. Needle with Aluminium Hub, 1.27 x 25mm, 18G x 1"	100/pk
NEED KA 02	121380	KRUUSE Disp. Needle with Aluminium Hub, 1.6 x 25mm, 16G x 1"	100/pk

KRUUSE Hypodermic Syringes (3 Part) Luer Tip

Superior quality 3 part syringes – ideal for veterinary use.

- Pointed synthetic rubber piston = reduced dead space
- Smooth and precise draw of fluids
- Available as both centric and eccentric
- Extended graduation
- Made of highest quality plastic
- Individually wrapped in paper-film peel pack



Provet Code	KRUUSE Code	Description	Graduation	Pack Size
SYRI K 01	112372	KRUUSE Centric 3-comp. 1ml	-	100
SYRI K 02	112373	KRUUSE Centric 3-comp. 2ml	3ml	100
SYRI K 05	112374	KRUUSE Centric 3-comp. 5ml	6ml	100
SYRI K 10	112375	KRUUSE Eccentric 3-comp. 10ml	12ml	100
SYRI K 20	112376	KRUUSE Eccentric 3-comp. 20ml	25ml	50
SYRI K 30	112377	KRUUSE Eccentric 3-comp. 30ml	35ml	50
SYRI K 50	112378	KRUUSE Eccentric 3-comp. 50ml	60ml	25

KRUUSE Hypodermic Syringes (3 Part) Luer Lock

Superior quality luer lock tip syringes – ideal for injecting thick fluids.

- Luer lock tip for secure connection
- Smooth and precise draw of fluids
- Extended graduation
- Made of high quality plastic
- Individually wrapped in paper-film peel pack



Provet Code	KRUUSE Code	Description	Graduation	Pack Size
SYRI JK 1	112384	Centric Luer Lock 2mL	3ml	100/pk
SYRI JK 2	112385	Centric Luer Lock 5mL	6ml	100/pk
SYRI JK 3	112386	Centric Luer Lock 10mL	12ml	100/pk
SYRI JK 4	112387	Centric Luer Lock 20mL	24ml	50/pk
SYRI JK 5	112388	Centric Luer Lock 30mL	34ml	50/pk
SYRI JK 6	112389	Centric Luer Lock 50mL	60ml	25/pk

KRUUSE Extension Tube with 3-Way Tap

- Extender tube with 3-way tap at one end and a male luer lock at the other end
- Flexible, matted PVC tubing
- Will not kink
- Latex-free Y site
- Tube length: 10cm
- Sterile



Provet Code	KRUUSE Code	Description	Pack Size
EXTE 3 10	230651	KRUUSE Y Extension Tube with 3-Way Tap	Single

KRUUSE 3-Way Tap

- For pressure applications up to 4.5 bar (65psi) 360° rotation
- Safe and secure connection
- Rotating male luer and two female luer connectors
- Axially and radially movable swivel lock for secure and speedy connection
- Arrow indication on the handle to indicate the direction of flow
- Sterile



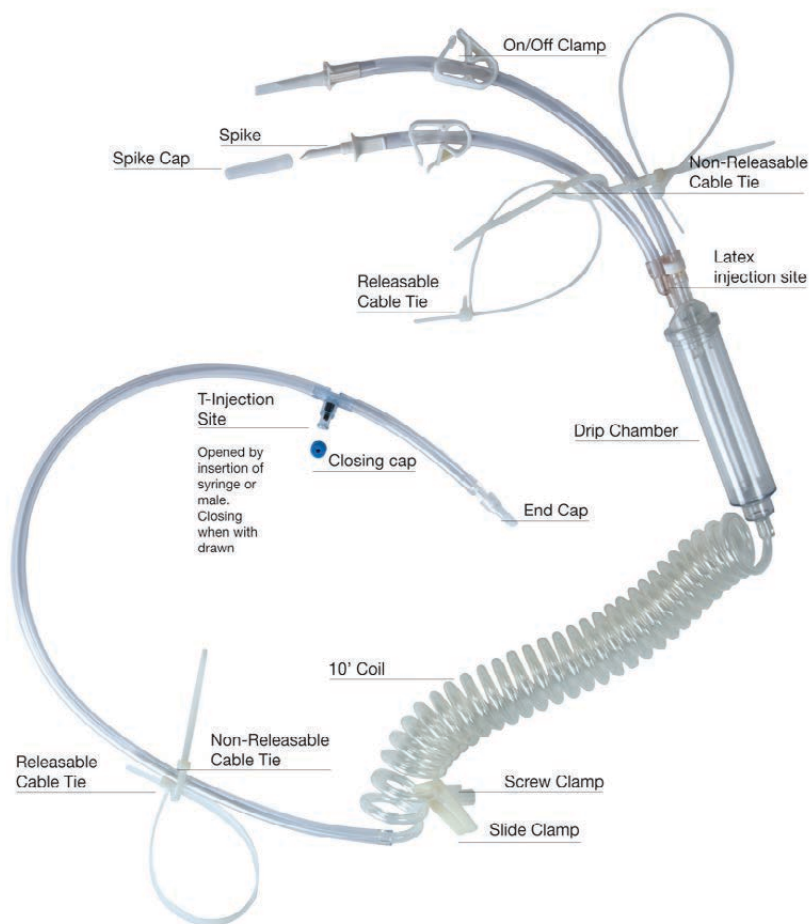
Provet Code	KRUUSE Code	Description	Pack Size
3WAY TAP	230648	KRUUSE 3-Way Tap, Sterile	Single

EQUIVET Large Bore IV Set

Large animals such as horses and cattle may require tremendous amounts of IV fluids during a short period of time. Conventional smaller IV sets cannot meet the fluid demands of, for example, a 600kg horse.

The Large Bore IV Set increases flow rate up to 30L per hour. This volume is necessary in severe colic and critical care emergencies.

The diameter of the Large Bore system is twice that of conventional IV drips. This translates into 16 times the flow rate of conventional sets.



Provet Code	KRUUSE Code	Description	Pack Size
ADMI K LA	230685	EQUIVET Large Bore IV Set, Sterile	Single

EQUIVET Large Bore IV Set Accessories

Large Bore Transfer Set (Provet Code EXTE JK 3)

For hooking up additional fluid bags, double-ended spike with 30cm of tubing and on/off dura clamp, sterile.

Large Bore Extension Set (Provet Code EXTE JK 2)

75cm with screw type female luer and spin luer lock, sterile.



EQUIVET Swivel Hanger for IV Sets

Features 5 hangers. Rotates to allow your patient to move freely without dislodging or entangling the IV set.

Provet Code	KRUUSE Code	Description	Pack Size
SWIV K 1	230680	EQUIVET Swivel Hanger for IV Sets	Single



**SPECIAL
ORDER**

EQUIVET Enteral Fluid Therapy

Enteral fluid therapy of a balanced electrolyte solution may be useful and a good alternative to IV fluid therapy in horses with large colon impactions, diarrhoea and some dorsal displacements. The EQUIVET Enteral Fluid Therapy Starter Kit makes it very easy to get started as every component needed is in the kit.

The balanced electrolyte solution is administered at 5L/hour through a modified EQUIVET Stomach Tube (9 x 2600mm). The stomach tube is kept in place with an EQUIVET Muzzle (3 sizes) together with two Velcro straps. The stomach tube is connected to a modified EQUIVET Large Bore IV Administration set which again connects to two collapsable Infuser Combi-set Bottles (5L).

Each pouch contains the correct electrolytes for 5L of water. The electrolyte pouch is simply added to the Combi-set bottle, which is then filled with tap water.



The Starter Kit contains:

- 1 x Modified EQUIVET Stomach Tube (9 x 2600mm)
- 3 x EQUIVET Muzzle in 3 sizes
- 2 x Velcro Straps
- 1 x Modified EQUIVET Large Bore IV Administration Set
- 2 x Infuser Combi-set Bottles 5L
- 1 x EQUIVET Electrolytes for Enteral Fluid (box of 36 pouches)

KRUUSE Code Description

230695	EQUIVET Enteral Fluid Therapy Starter Kit
--------	---



KRUUSE Code Description

- | | |
|--------|---|
| 190278 | EQUIVET Superior stomach tube for foal with connector |
| 230689 | EQUIVET Large Bore IV set with connector |
| 230697 | EQUIVET Strap for Enteral Fluid Therapy* |
| 230520 | Spare Infuser Plastic Bottle 5L, Sterile, 8/pk* |
| 230522 | Rubber Washer for infuser bottle* |
| 210303 | EQUIVET Muzzle S |
| 210304 | EQUIVET Muzzle M |
| 210305 | EQUIVET Muzzle L |
| 230696 | EQUIVET Electrolytes, 36 pouches* |

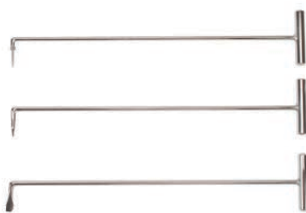
*** Special Order lines**

KRUUSE EQUINE DENTAL RANGE

KRUUSE offer a wide range of high quality dental instruments, many of which have been developed in close collaboration with leading equine veterinary specialists and tested in equine practices globally.

**SPECIAL
ORDER**

- MagFloats and carbide blades
- Mouth wedges and gags
- Cheek retractors
- Speculums
- Dental instruments and sets



To order or enquire about any of these lines, please contact your Provet Business Account Manager or local Customer Service team.



KRUUSE Blood Collection Bag

The 500ml bag of CPDA-1 anticoagulant is sufficient for a 4L blood collection bag. Provide your own anticoagulant for the use of these dry blood collection bags.

Any quantity of blood can be collected into these bags as long as the ratio of CPDA-1 and blood is 1 to 7

Provet Code	KRUUSE Code	Description	Pack Size
BLOO C H4	230480	KRUUSE Dry Blood Collection Bag 4L, Horse	Single



KRUUSE CPDA-1 Anticoagulant

Add 125ml CPDA-1 to 875ml blood to get 1,000ml for blood transfusion. This anticoagulant will give whole blood a shelf life of 35 days.

Provet Code	KRUUSE Code	Description	Pack Size
ANTI C 500	230483	KRUUSE CPDA-1 500ml Anticoagulant	Single

100ml of CPDA-1 contains:

Citric acid (anhydrous)	0.299g
Sodium citrate (dihydrate)	2.630g
Sodium phosphate monohydrate	0.222g
Dextrose monohydrate	3.190g
Adenine	0.0275g
Sterile water q.s.	100ml



KRUUSE Blood Transfusion Set with Filter

For administering blood to patients.

- With filter and plastic drip chamber
- Flow regulating roller clamp
- Sterile
- Provides high flow rate, protects against larger particles and creates an even drop formation

Provet Code	KRUUSE Code	Description	Pack Size
INFU B K	230617	KRUUSE Blood Transfusion Set with Filter	Single



SPECIAL
ORDER

KRUUSE Blood Transfer Bag

Designed to receive blood components or plasma. The transfer bag has two spike entry ports and a single lead with two transfer spikes. Sterile and contains no anticoagulant.

KRUUSE Code	Description
-------------	-------------

230484	KRUUSE Blood Transfer Bag 1,000ml
--------	-----------------------------------



EQUIVET SURGERY TABLE

High quality surgical equipment is a must for equine hospitals offering this service. KRUUSE offers equine hospitals a superior surgery table which is safe for both the patient and the hospital team.



Scan code to view video

When top priorities are:

- ✓ Functionality
- ✓ Flexibility
- ✓ Safety
- ✓ Design
- ✓ User and service friendliness

This surgery table has been designed with help from leading equine surgeons.

Standard accessories

- 4 vertical poles, length 1,700mm
- 2 horizontal bars with clamps, length 1,100mm
- 4 clamps for belt
- Complete leg support including 1 padded leg support, 1 locking device and 2 leg support bars
- Stand with clamp for infusion bags
- 4 coated foam strips (for head section and side panels)

- 4 wedge-shaped foam paddings
- Anaesthetic hose support
- Moveable rack

KRUUSE Code
281600

**SPECIAL
ORDER**



SURGERY

EQUIVET Surgery Table Cover

EQUIVET Surgery Table Cover protects, improves hygiene and effectively reduces time spent on cleaning the surgery table. This makes the operating theatre distinctly quicker to prepare for the next patient. Supplied as a roll of blue-green PE containing a total of 14 covers - conveniently perforated every 3.5m (ie corresponding to the length of one cover).



Provet Code	KRUUSE Code	Description	Pack Size
DRAP 21007	281630	EQUIVET Surgery Table Cover 200 x 350cm	14 Covers

EQUIVET Surgery Table Cover Wall Rack

This stainless steel rack comes with screws, ready to be mounted to the wall. The roll of EQUIVET Surgery Table Covers fits nicely into the rack.



Provet Code	KRUUSE Code	Description	Pack Size
RACK KW1	281631	EQUIVET Surgery Table Cover Wall Rack	Single



EQUIVET Sling

Designed at Bristol University Veterinary School, the EQUIVET Sling provides the facility for lifting, as well as supporting, horses in the standing position.

- Easy fitting to either standing or recumbent animals
- Precision tailoring ensures a secure and comfortable fit
- Padded areas at pressure points to prevent nerve damage
- Adjustable to facilitate larger and smaller animals
- Central shackling point allows the animal to turn or be turned
- Strong construction from synthetic materials facilitates sterilisation after use
- High quality materials used
- Proof tested, with 1 tonne safe working load (SWL)
- Lifting capacity: 750kg

The EQUIVET Sling is only suitable for use by experienced equine veterinarians and it should be noted that sedation may be required on certain animals. Must be used in conjunction with a hoist or winch, which must have a SWL that exceeds the gross weight of the horse being lifted or supported.



KRUUSE Code Description

281562	EQUIVET Sling
--------	---------------



SURGICAL DRAPES



EQUIVET Laparoscopy Set - Sterile

- 1 x wrapping table cover reinforced 160 x 200 cm
- 1 x mayo cover 80 x 145 cm
- 4 x adhesive tapes 10 x 50 cm
- 2 x towels 30 x 40 cm
- 2 x urology SMS surgical gowns XL
- 1 x incise drape 45 x 42 cm
- 1 x drape 250 x 500 cm with incision area 10 x 35 cm and two fluid collection pouches

Provet Code	KRUUSE Code	Description	Pack Size
LAPA S 02	281632	EQUIVET Laparoscopy Set, 2 ply	Single



EQUIVET Laparotomy Set - Sterile

- 1 x wrapping table cover reinforced 160 x 200 cm
- 1 x table cover 160 x 200 cm
- 2 x leggings 3 plies 75 x 120 cm
- 1 x adhesive tape 10 x 50 cm
- 1 x drape 260 x 370 cm with incision area 10 x 60 cm, fluid collection pouch 95 x 100 cm with U split 30 x 70 cm, 2 x U split 15 x 85 cm

Provet Code	KRUUSE Code	Description	Pack Size
LAPA S 01	281633	EQUIVET Laparotomy Set, 2 ply	Single



EQUIVET Extremity Set - Sterile

- 1 x wrapping table cover, reinforced, 160 x 200 cm
- 1 x drape 200 x 320 cm with elastic fenestration 6 cm, reinforcement and tube holders

EQUIVET Bilateral Extremity Set - Sterile

- 1 x wrapping table cover, reinforced, 160 x 200 cm
- 1 x drape 200 x 320 cm with two elastic fenestrations 6 cm, reinforcement and tube holders

Provet Code	KRUUSE Code	Description	Pack Size
EXTR S 01	281635	EQUIVET Extremity Set, 3 ply	Single
EXTR S 02	281636	EQUIVET Bilateral Extremity Set, 3 ply	Single



EQUIVET Arthroscopy Set - Sterile

- 1 x wrapping table cover, reinforced, 160 x 200 cm
- 1 x adhesive tape 10 x 50 cm
- 2 x towels 30 x 40 cm
- 2 x urology SMS surgical gown XL
- 1 x stockinette 22 x 100 cm
- 1 x drape 250 x 500 cm with two rectangular fenestration 10 x 32 cm covered with elastic film and reinforcement

Provet Code	KRUUSE Code	Description	Pack Size
ARTH S 01	281634	EQUIVET Arthroscopy Set, 2 ply	Single



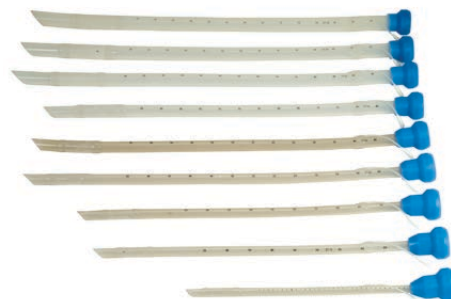
**SPECIAL
ORDER**

KRUUSE Silicone Endotracheal Tubes

Used to deliver anaesthetic gases after oral intubation into the desired position. The inflated balloon cuff prevents gas loss during assisted respiration. Silicone tapered connection allows easy connection to most anaesthetic machines.

High quality silicone tubes for equine use at an affordable price.

- Soft and flexible
- Minimal discomfort to the patient
- Fully transparent
- Universal connector guarantees that all sizes easily fit your anaesthetic machine
- Can be sterilised at max. 115°C for max. 20 minutes



KRUUSE Code Description

282200	KRUUSE Silicone Endotracheal Tube I.D. 14mm, O.D. 19mm, L. 57cm
282210	KRUUSE Silicone Endotracheal Tube I.D. 16mm, O.D. 22mm, L. 70cm
282220	KRUUSE Silicone Endotracheal Tube I.D. 18mm, O.D. 24mm, L. 75cm
282230	KRUUSE Silicone Endotracheal Tube I.D. 20mm, O.D. 26mm, L. 90cm
282240	KRUUSE Silicone Endotracheal Tube I.D. 22mm, O.D. 30mm, L. 90cm
282250	KRUUSE Silicone Endotracheal Tube I.D. 24mm, O.D. 32mm, L. 90cm
282260	KRUUSE Silicone Endotracheal Tube I.D. 26mm, O.D. 35mm, L. 100cm
282270	KRUUSE Silicone Endotracheal Tube I.D. 28mm, O.D. 39mm, L. 100cm
282280	KRUUSE Silicone Endotracheal Tube I.D. 30mm, O.D. 42mm, L. 100cm



**SPECIAL
ORDER**

KRUUSE Large Animal Endotracheal Tubes with Balloon

KRUUSE high quality endotracheal tubes can be sterilised by autoclaving, provided that the temperature does not exceed 134°C, or it can be sterilised by ethylene oxide.

KRUUSE Code Description

272044	KRUUSE Endotracheal Tube for Large Animals 18mm
272045	KRUUSE Endotracheal Tube for Large Animals 20mm
272046	KRUUSE Endotracheal Tube for Large Animals 25mm
272047	KRUUSE Endotracheal Tube for Large Animals 30mm
272048	KRUUSE Endotracheal Tube for Large Animals 35mm
272049	KRUUSE Endotracheal Tube for Large Animals 40mm



**SPECIAL
ORDER**

KRUUSE Biopsy Needle

Used for taking muscle biopsy on horses.

Needle length 10cm

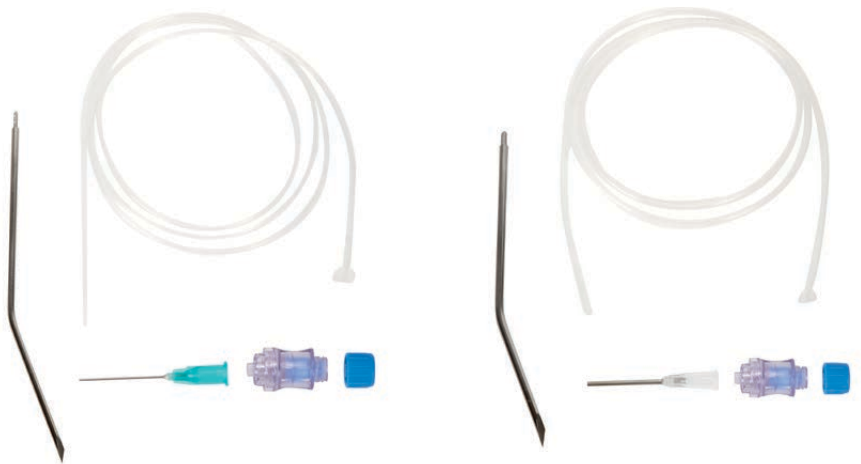
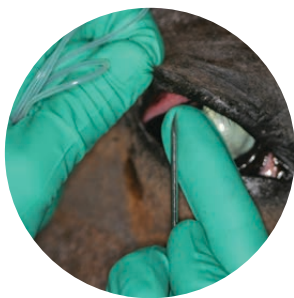
KRUUSE Code Description

290035	Biopsy needle, modified Bergström 6mm
--------	---------------------------------------



EQUIVET Ocular Lavage Kits

The subpalpebral ocular lavage catheter is designed to keep a lavage catheter in situ for an extended period of time with minimum discomfort to the patient. Medication can readily be administered via the long tubing. The proximal tip of the catheter is a disc that will lie flat against the inside of the eyelid. With the needleless injection site it is a lot easier for the client to treat the horse. If using a higher viscosity medication, choose the set with the 8 FG size silicone catheter instead of the 5 FG size silicone catheter.



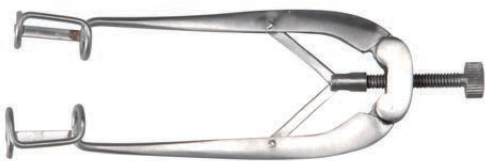
Provet Code	KRUUSE Code	Description	Pack Size
EYE LK 5	230700	EQUIVET Ocular Lavage 5 FG Kit	Single
EYE LK 8	230705	EQUIVET Ocular Lavage 8 FG Kit	Single



EQUIVET Eye Speculum

A stepless opening device for the eyelid.

KRUUSE Code	Description
230707	EQUIVET Eye Speculum, 8.7cm



EQUIVET Eye Speculum Superior

Excellent for both standing and general anaesthetic surgery.
The EQUIVET Eyelid Speculum allows for uniform opening of the eyelids, allowing superior access to the bulbar and palpebral conjunctiva, nictitating membrane, sclera and cornea.

Provet Code	KRUUSE Code	Description
EYE S K01	230706	EQUIVET Eye Speculum Superior, Model HHP



EQUIVET Eye Protector Kit

Early use of the EQUIVET Eye Protector may prevent minor eye injuries from becoming major problems. The EQUIVET Eye Protector features the exclusive equine “Eye Patch”, which effectively closes the horse’s eye for maximum pain relief, while allowing for constant monitoring of the injury or problem.

The eye protector gives the eye the most complete rest possible, eliminating the need for surgical closure.

Features and Benefits:

- Prevents the horse from rubbing its eye
- Designed to help the horse keep its eye closed without suturing
- The mask fits the horse snugly and is highly protective of the injured eye, yet comfortable
- Keeps flies and insects away from the injured eye while providing ventilation during the healing process
- Provides unmatched level of hygiene
- Easy to use by horse owners



Provet Code	KRUUSE Code	Description
-	230780	EQUIVET Eye Protector Kit, Left Eye, Small
-	230781	EQUIVET Eye Protector Kit, Right Eye, Small
EQUI K EK3	230782	EQUIVET Eye Protector Kit, Left Eye, Medium
EQUI K EK4	230783	EQUIVET Eye Protector Kit, Right Eye, Medium
EQUI K EK5	230784	EQUIVET Eye Protector Kit, Left Eye, Large
EQUI K EK6	230785	EQUIVET Eye Protector Kit, Right Eye, Large
EQUI K EK7	230786	EQUIVET Eye Protector Kit, Left Eye, X-Large
EQUI K EK8	230787	EQUIVET Eye Protector Kit, Right Eye, X-Large



Each Kit Contains:

- Blinker hood with right or left ball cup
- 3 fur snap-on rings
- 2 “tear-pads” to absorb excess moisture
- 15 gauze pads, sterilised (4” x 4” or 3” x 3”)
- Protective ventilated ball cup



KRUUSE EYE PROTECTOR MASKS

Semi-flexible protectors made of 4mm low-density polyethylene, without colourants. If broken they do not splinter.

The masks are held in place with adhesive elastic straps that are adjustable and contoured to avoid window oedemas.

Easy to use. The patch, with or without protector, can be adjusted independently of the mask.

**SPECIAL
ORDER**



KRUUSE Eye Mask with 1 Patch

Easy to use: The flat patch can be adjusted independently right or left on the mask.

KRUUSE Codes: 165217 to 165221



KRUUSE Full Eye Protector Mask

The semi-flexible full eye protector made of 4mm low-density polyethylene can be adjusted without effort right or left on the mask without the need to remove the whole mask.

KRUUSE Codes: 165222 to 165226



KRUUSE Full Perforated Eye Protector Mask

The semi flexible full eye protector made of 4mm low density polyethylene has 8 perforations to optimise the air circulation.

The eye protector is adjusted on the mask left or right side without the need to remove the whole mask.

KRUUSE Codes: 165227 to 165231



KRUUSE Half Eye Protector Mask

The mask is held in place with adhesive elastic straps, adjustable to height and contours to avoid window edemas. The semi-flexible half eye protector made of 4mm low density polyethylene can be adjusted independently right or left on the mask.

KRUUSE Codes: 165232 to 165236



Scan code to view video

Masks available for foals and horses. Contact your Business Account Manager or Customer Service team for more information. Spare parts are available on request.

HOOF EQUIPMENT

KRUUSE Hoof Knife - Narrow Bladed

Stainless steel blade, very sharp, length of blades 80mm, with hard wood handle.



Provet Code	KRUUSE Code	Description
-------------	-------------	-------------

HOOF K 01	220035	KRUUSE hoof knife, narrow blade, right handed
HOOF K 02	220045	KRUUSE hoof knife, narrow blade, left handed

KRUUSE Hoof Knife - Eye Loop

Excellent abscess knife with a very small loop. Ideal for searching the hoof or resecting.



Provet Code	KRUUSE Code	Description
-------------	-------------	-------------

HOOF K EL	220023	KRUUSE hoof knife, eye loop
-----------	--------	-----------------------------

KRUUSE Sharpening Stone

For hoof knives and scrapers.



Provet Code	KRUUSE Code	Description
-------------	-------------	-------------

HOOF K SS1	220070	KRUUSE hoof knife sharpening stone
------------	--------	------------------------------------

EQUIVET Extra Large Hoof Tester

Maximum jaw opening of 20cm, much larger than standard testers. Jaw teeth are large cleats for better hold. Nice Design in quality stainless steel.



Provet Code	KRUUSE Code	Description
-------------	-------------	-------------

HOOF T K1	220240	EQUIVET Hoof Tester Large, 47cm
-----------	--------	---------------------------------

EQUIVET REPRODUCTION PRODUCTS

KRUUSE Latex Condom for Stallion

For collecting semen for examination purposes.

Provet Code	KRUUSE Code	Description	Pack Size
COND E	340380	KRUUSE Latex Condom for Stallion	Single



EQUIVET Uterus Flushing Tube

The bore spike ensures an easy and secure coupling of flushing tube and flushing liquid. Non-traumatic tip and side holes.

Provet Code	KRUUSE Code	Description	Pack Size
UTER F T	340835	EQUIVET Uterus Flushing Tube, Sterile, 190cm	Single



KRUUSE Insemination Catheters

Very flexible insemination catheter with a non-traumatic end. Outer Diameter 5mm, Inner Diameter 2.4mm. The luer of the syringe connects to the catheter through a light blue tip.

Provet Code	KRUUSE Code	Description	Pack Size
UTER F C2	230830	BOVIVET Uterine Catheter 53.5cm, sterile	25
INSE K 1	230831	KRUUSE Insemination Catheter, 60cm, sterile	25
UTER F C1	230841	BOVIVET Uterinary Catheter, 60cm, non-sterile	25



KRUUSE IUI Insemination Catheter and Stylet

Stylet and catheter for deep uterine insemination where small semen doses are used.

Provet Code	KRUUSE Code	Description	Pack Size
INSE K 2	340882	EQUIVET IUI Insemination Cather for 0.5mL, 75cm, sterile	Single



EQUIVET Uterine Foley Catheters

Silicone catheter with large Foley type inflatable balloon. Autoclavable.



Provet Code	KRUUSE Code	Description	Pack Size
CATH E 33F	340846	EQUIVET Uterine Flushing Catheter 65cm, 8mm	Single

EQUIVET EmCon Filter

Provet Code	KRUUSE Code	Description	Pack Size
EMBR F K1	340810	KRUUSE EmCon Filter	Single



KRUUSE Y-Junction Long

Provet Code	KRUUSE Code	Description	Pack Size
INFU K EQ	340850	Y-Junction long, 157 cm	Single



KRUUSE Petri Dish for Embryo Transfer

Provet Code	KRUUSE Code	Description	Pack Size
EMBR D K1	290570	Petri Dish diameter 90mm Plastic	Single



KRUUSE Sanitary Sleeves

For sheath protection



Provet Code	KRUUSE Code	Description	Pack Size
EMBR S K1	340842	Sanitary sleeves	60

EQUIVET Disposable Speculum

Sterile and practice disposable speculum, softly rounded edges on both ends. Silver foil coating inside and out. 36mm inner diameter.



Provet Code	KRUUSE Code	Description	Pack Size
VAGI S 01	290997	Equivet Disposable Speculum	Single



OTHER EQUINE PRODUCTS

EQUIVET Muzzles

Prevents the horse from eating.

Provet Code	KRUUSE Code	Description	Pack Size
MUZZ EQ SM	210303	EQUIVET Muzzle Small	Single
MUZZ EQ MD	210304	EQUIVET Muzzle Medium	Single
MUZZ EQ LG	210305	EQUIVET Muzzle Large	Single



KRUUSE Digital Thermometer

- Waterproof with alarm & memory
- Supplied with strong plastic case

Provet Code	KRUUSE Code	Description	Pack Size
THER K 01	291103	KRUUSE Digital Thermometer	Single



KRUUSE Mouth Flushing Syringe

For dosing large quantities of water to clean the horse's mouth before oral examination.

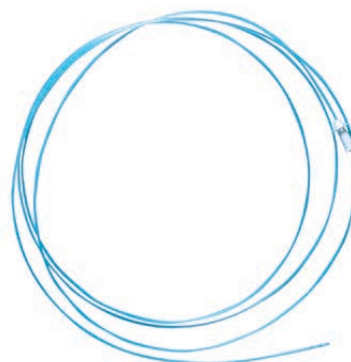
Provet Code	KRUUSE Code	Description	Pack Size
SYRI P G4	113865	KRUUSE Mouth Flushing Syringe 400ml with long nozzle	Single



EQUIVET Endoscope Flushing Catheter

For rinsing lower respiratory tract through the biopsy channel in the endoscope.

Provet Code	KRUUSE Code	Description	Pack Size
CATH E F	240611	EQUIVET Endoscope Flushing Catheter, Sterile, 2.3mm x 220cm	Single



EQUIVET Stallion Catheter

Stallion urinary catheter, sterile

Provet Code	KRUUSE Code	Description	Pack Size
CATH S E2	230765	EQUIVET Stallion Catheter 7.3 x 135cm	Single





KRUUSE Equine Wound Chart

Dry 

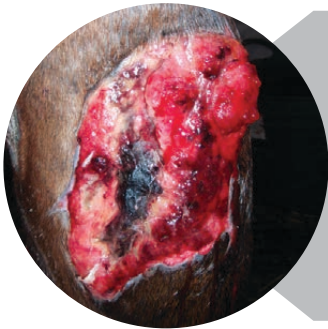
Primary 

Secondary 

Tertiary 



- ▶ **Acute/traumatic wound**
 - Evaluate the wound
 - Clean the wound using KRUUSE wound lavage system
 - Dress and bandage according to evaluation

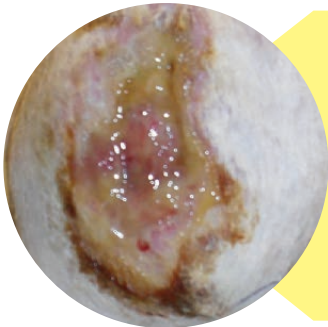


- ▶ **Necrotic**
 - Debride the necrotic tissue and lavage
 - Protect wound margins and surrounding skin from exudate

Manuka Honey Hydrogel (Intrasite or similar)

KRUUSE Foam

KRUUSE Flex Bandages
KRUUSE Soft-Flex
KRUUSE Tubular Bandage



- ▶ **Sloughy**
 - Debride devitalised tissue and lavage
 - Protect wound margins and surrounding skin from exudate

Manuka Honey Hydrogel (Intrasite or similar)

KRUUSE Foam

KRUUSE Flex Bandages
KRUUSE Soft-Flex
KRUUSE Tubular Bandage

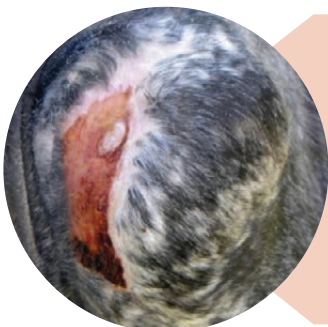


- ▶ **Granulating**
 - Maintain a moist environment and protect new healthy granulation from damage between dressing changes

Hydrogel (Intrasite or similar)

KRUUSE Foam

KRUUSE Flex Bandages
KRUUSE Soft-Flex
KRUUSE Tubular Bandage



- ▶ **Epithelialising**
 - Maintain a clean environment and protect from unnecessary trauma

Hydrogel (Intrasite or similar)

KRUUSE Foam

KRUUSE Flex Bandages
KRUUSE Soft-Flex
KRUUSE Tubular Bandage

Moderate exudating

Heavily exudating

Primary 

Secondary 

Tertiary 

Primary 

Secondary 

Tertiary 

Manuka Honey
Hydrogel (Intrasite
or similar)

KRUUSE Foam
Steri-Protect

KRUUSE Flex Bandages
KRUUSE Soft-Flex
KRUUSE Tubular
Bandage

Manuka Honey

KRUUSE Foam
Steri-Protect

KRUUSE Flex Bandages
KRUUSE Soft-Flex
KRUUSE Tubular
Bandage

Manuka Honey
Hydrogel (Intrasite
or similar)

KRUUSE Foam
Steri-Protect

KRUUSE Flex Bandages
KRUUSE Soft-Flex
KRUUSE Tubular
Bandage

Manuka Honey

KRUUSE Foam
Steri-Protect

KRUUSE Flex Bandages
KRUUSE Soft-Flex
KRUUSE Tubular
Bandage

Manuka Honey
Hydrogel (Intrasite
or similar)

KRUUSE Foam

KRUUSE Flex Bandages
KRUUSE Soft-Flex
KRUUSE Tubular
Bandage

This image shows a single sheet of white paper with horizontal ruling lines. The lines are evenly spaced and run across the width of the page. There are no margins, text, or other markings on the paper.

This image shows a single sheet of white paper with horizontal ruling lines. The lines are evenly spaced and run across the width of the page. There are no margins, text, or other markings on the paper.



A **covetrus**  Company

Contact your local branch for more information or to order:

PROVET NEW ZEALAND

PROVET AUCKLAND • PROVET CHRISTCHURCH • PROVET PALMERSTON NORTH

P: 0800 776 838 F: 0800 776 839

www.provet.co.nz